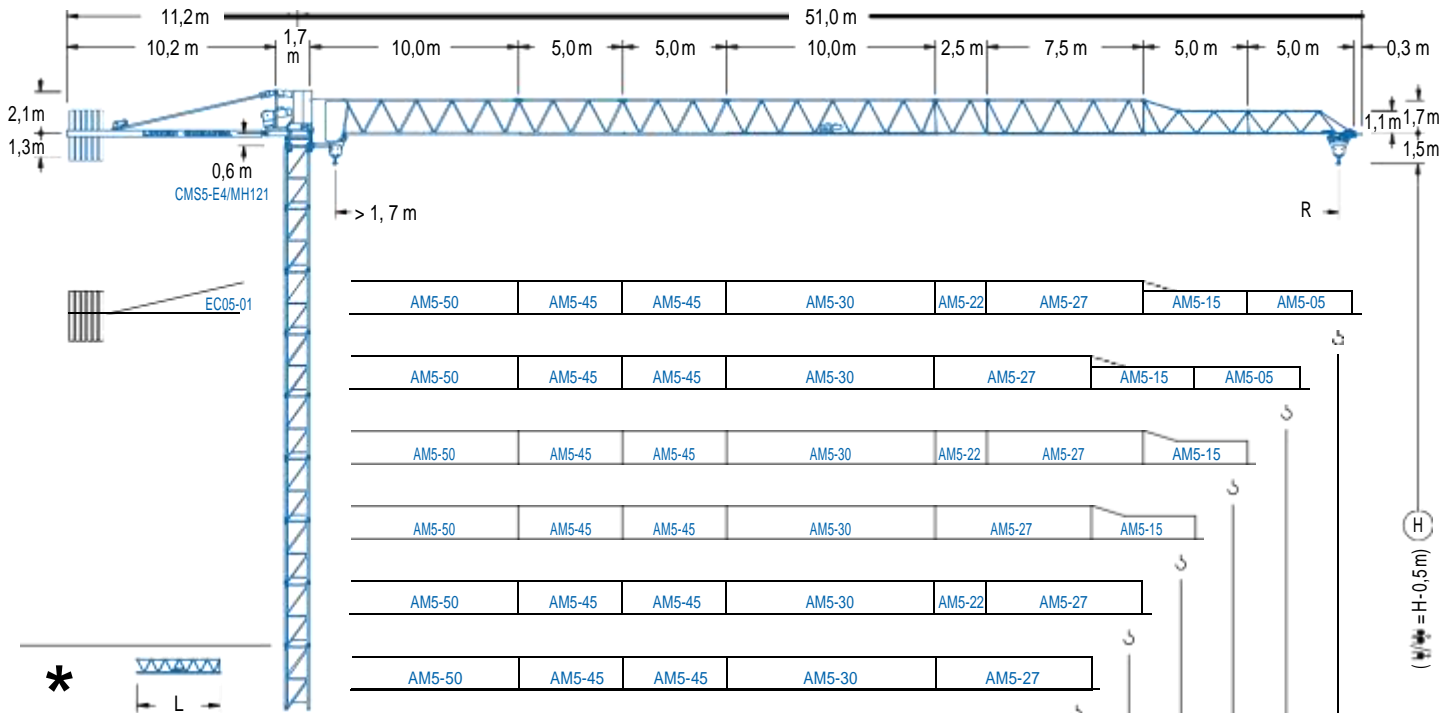
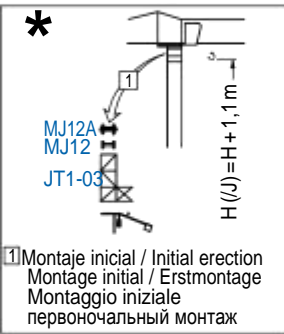


5 t

COMANSA LC 5010



AM5-50 = AM5-55T + AM5-55D
AM5-30 = AM5-35T + AM5-35D



AM5-50	AM5-45	AM5-45	AM5-30	AM5-22	AM5-27	AM5-15	AM5-05
AM5-50	AM5-45	AM5-45	AM5-30	AM5-27	AM5-15	AM5-05	
AM5-50	AM5-45	AM5-45	AM5-30	AM5-22	AM5-27	AM5-15	
AM5-50	AM5-45	AM5-45	AM5-30	AM5-27	AM5-15		
AM5-50	AM5-45	AM5-45	AM5-30	AM5-22	AM5-27		
AM5-50	AM5-45	AM5-45	AM5-30	AM5-27			
AM5-50	AM5-45	AM5-45	AM5-30	AM5-15			
AM5-50	AM5-45	AM5-45	AM5-30	AM5-22			
AM5-50	AM5-45	AM5-45	AM5-30	AM5-22			
AM5-50	AM5-45	AM5-45	AM5-30				
AM5-50	AM5-45	AM5-30	AM5-22				
AM5-50	AM5-45	AM5-30					
AM5-50	AM5-30	AM5-22					
AM5-50	AM5-30						

R	2500	2500	2500	2500	2500	2450	2200	2000	1750	1600	1500	1200	1100	1000	m
	20,0	22,5	25,0	27,5	30,0	32,5	35,0	37,5	40,0	42,5	45,0	47,5	50,0		
	2500	2500	2500	2500	2500	2420	2200	2000	1920	1760	1650	1320	1210	990	kg
	41203750	36303300	31902900	28602600	25802350	23102100	20901900	18101650	16501500	15401400	12101100	11001000	990900	kg	
															kg
															kg



CL

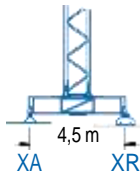
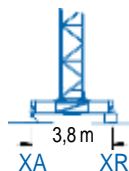
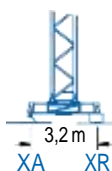
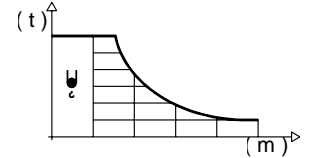


DIAGRAMA DE CARGAS

Load chart / Diagramme de charges / Lastdiagramm / Diagramma di carico / Диаграмма распределения нагрузки

r (m)	ψ	rCmax (m)	10,0	12,5	15,0	17,5	20,0	22,5	25,0	27,5	30,0	32,5	35,0	37,5	40,0	42,5	45,0	47,5	50,0	↔(m) ↓(kg)
50,0	22,8							2500	2260	2020	1830	1670	1530	1410	1310	1220	1140	1070	1000	
47,5	23,4							2500	2320	2090	1890	1720	1580	1460	1350	1260	1170	1100		
45,0	23,8							2500	2370	2130	1930	1760	1610	1490	1380	1280	1200			
42,5	27,1								2500	2460	2230	2040	1880	1730	1610	1500				
40,0	27,0								2500	2450	220	2030	1870	1720	1600					
37,5	27,4								2500	2490	2250	2060	1890	1750						
35,0	28,7								2500	2380	2170	2000								
32,5	29,0								2500	2410	2200									
30,0	29,5								2500	2450										
27,5	27,5								2500											
25,0	25,0								2500											
22,5	22,5							2500												
20,0	20,0						2500													



r (m)	ψ	rCmax (m)	10,0	12,5	15,0	17,5	20,0	22,5	25,0	27,5	30,0	32,5	35,0	37,5	40,0	42,5	45,0	47,5	50,0	↔(m) ↓(kg)
50,0	12,3	5000	4890	3970	3330	2850	2480	2190	1950	1760	1590	1450	1330	1220	1130	1040	970	900		
47,5	12,5	5000	4080	3420	2930	2550	2250	2010	1810	1640	1490	1370	1260	1160	1080	1000				
45,0	12,7	5000	4150	3480	2980	2600	2300	2050	1840	1670	1520	1400	1290	1190	1100					
42,5	14,4	5000	4780	4010	3450	3010	2660	2380	2150	1950	1780	1640	1510	1400						
40,0	14,3	5000	4780	3980	3420	2990	2650	2370	2130	1940	1770	1630	1500							
37,5	14,5	5000	4800	4040	3470	3030	2680	2400	2160	1970	1800	1650								
35,0	15,1	5000	4250	3650	3190	2830	2530	2280	2080	1900										
32,5	15,3	5000	4290	3690	3230	2860	2560	2310	2100											
30,0	15,3	5000	4300	3700	3240	2870	2570	2320	2110											
27,5	15,5	5000	4360	3750	3280	2900	2600													
25,0	15,5	5000	4350	3740	3270	2900														
22,5	15,6	5000	4390	3770	3300															
20,0	15,5	5000	4360	3750																

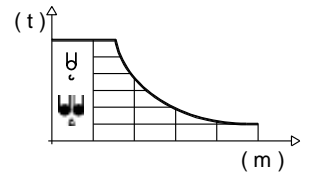
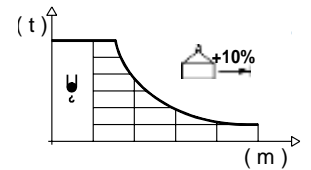


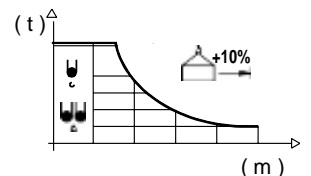
DIAGRAMA DE CARGAS POWERLIFT

Load chart PowerLift / Diagramme de charges PowerLift / Lastdiagramm PowerLift / Diagramma di carico PowerLift / Диаграмма распределения нагрузки PowerLift

r (m)	ψ	rCmax (m)	10,0	12,5	15,0	17,5	20,0	22,5	25,0	27,5	30,0	32,5	35,0	37,5	40,0	42,5	45,0	47,5	50,0	↔(m) ↓(kg)
50,0	24,6							2500	2460	2210	2000	1830	1680	1550	1440	1340	1250	1170	1100	
47,5	25,3								2500	2280	2060	1880	1730	1600	1480	1380	1290	1210		
45,0	25,8								2500	2330	2110	1920	1770	1630	1520	1410	1320			
42,5	29,4								2500	2500	2450	2240	2060	1900	1770	1650				
40,0	29,3								2500	2440	2230	2050	1900	1760						
37,5	29,6								2500	2470	2260	2080	1920							
35,0	31,2								2500	2500	2390	2200								
32,5	31,6								2500	2420	2200									
30,0	30,0								2500	2420										
27,5	27,5								2500											
25,0	25,0								2500											
22,5	22,5							2500												
20,0	20,0						2500													



r (m)	ψ	rCmax (m)	10,0	12,5	15,0	17,5	20,0	22,5	25,0	27,5	30,0	32,5	35,0	37,5	40,0	42,5	45,0	47,5	50,0	↔(m) ↓(kg)
50,0	13,1		5000	4280	3590	3080	2690	2370	2120	1910	1730	1580	1450	1330	1230	1140	1060	990		
47,5	13,4	5000	4410	3700	3170	2770	2450	2190	1970	1790	1630	1500	1380	1270	1180	1100				
45,0	13,7	5000	4490	3770	3240	2820	2500	2230	2010	1820	1670	1530	1410	1300	1210					
42,5	15,5	5000	4360	3750	3280	2900	2600	2350	2140	1950	1800	1660	1540							
40,0	15,4	5000	4340	3730	3260	2890	2580	2330	2120	1940	1790	1650								
37,5	15,6	5000	4390	3770	3300	2920	2620	2360	2150	1970	1810									
35,0	16,3	5000	4640	3990	3490	3100	2770	2510	2280	2090										
32,5	16,5	5000	4690	4040	3530	3130	2810	2540	2310											
30,0	16,8	5000	4760	4100	3590	3180	2860	2580												
27,5	16,8	5000	4770	4110	3600	3190	2860													
25,0	16,8	5000	4770	4110	3600	3190														
22,5	16,9	5000	4820	4150	3630															
20,0	16,8	5000	4820	4150	3630															



MECANISMOS

Mechanisms / Mécanismes / Antriebe / Meccanismi / Механизмы

ES3-18-12
250 m
18 kw

	I	II	III
m/min	8	32	64
kg	2500	2500	1300

	I	II	III
m/min	4	16	32
kg	5000	5000	2600

ES3-13-12 *
225 m
13,2 kw

	I	II	III
m/min	6	24	48
kg	2500	2500	1300

	I	II	III
m/min	3	12	24
kg	5000	5000	2600

EfU2-18-12 *
250 m
18 kw

EfU2-11-12 *
225 m
11 kw

MECANISMOS

Mechanisms / Mécanismes / Antriebe / Meccanismi / Механизмы

	CS2-1.9
	1,9 kw
16 m/min 48 m/min	

	CfU-2.2	*
	2,2 kw	
0 ⇔ 80m/min		

	gr-9.0
	90 Nm
0 ⇔ 0,8rpm	

	tS2-3.0	tS2-4.5	tS2-5.5
	2x30 Nm	2x45 Nm	2x55 Nm
	20 m/min		
	XR0H	XR2H	XR3H XR3H-A

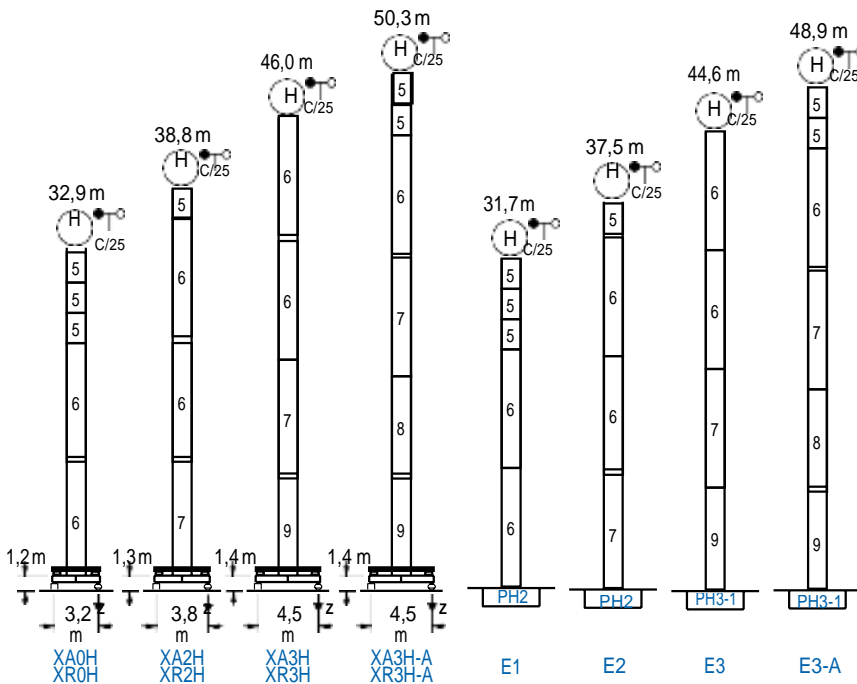
POTENCIA/POWER/PUISSANCE/LEISTUNG/POTENZA/Мощность				Tensión de alimentación / Operating voltage / Tension de service / Betriebsspannung / Tensione di alimentazione / напряжение источника питания	Generador/Generator/Générateur/Generator/Generatore/Генератор
Elevación/Hoist/Levage/Hub/Sollevamento/тип механизма (подъем)	Carro/Trolley/Chariot/Laufkatze/Carrello/Грузовая тележка	Giro/Slewing/Rotation/Drehbewegung/Rotazione/поворот	Traslación/Travel/Translation/Verfahrbewegung/Traslazione/Ход		
ES3-18-12	CS2-1.9	GR-9.0	(2x) TS2-3.0	400V 3ph 50Hz	107 kVA
ES3-13-12			(2x) TS2-4.5		90 kVA
EFU2-18-12	CFU-2.2	(2x) TS2-5.5	60 kVA		
EFU2-11-12		48 kVA			

Opcional / Optional / En option / Kaufoption / Opzionale / опционально
*

ALTURAS BAJO GANCHO

Heights under hook / Hauteurs sous crochet / Hakenhöhen / Altezza sotto gancio / Высота под крюком

∅ 1,2m



nº	Ref.	∅	h
5	MH121	1,2	3,0
6	MH124-1	1,2	11,8
7	MH124A	1,2	11,8
8	MT123A	1,2	10,1
9	MT123	1,2	10,1

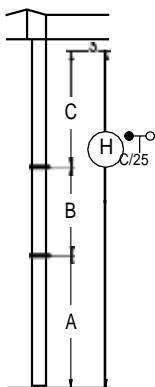
MH124-1 = 4x MH121 - 0,2 m

	H = H + 0,2 m
	H = H
	H = H
	H = H - 0,2 m

Z máx.	En servicio / In operation / En service / In Betrieb / In servizio / при работе	XR0H..... 43 t XR2H..... 42 t XR3H..... 43 t XR3H-A..... 48 t
	Fuera de servicio / Out of service / Hors service / Ausser Betrieb / Fuori servizio / В стационарном состоянии	XR0H..... 42 t XR2H..... 49 t XR3H..... 64 t XR3H-A..... 76 t

GRÚA ARRIOTRADA

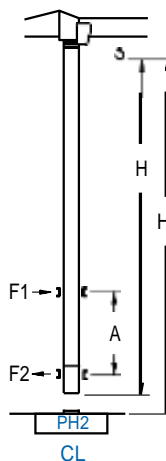
Braced crane / Grue à entretoisement / Abgespannter Kran / Gru ancorata / наращиваемый кран



	XA0H	XA2H	XA3H	XA3H-A
A max	27,8	33,9	41,1	45,2
A min	16,0	16,1	23,3	33,4
B max	21,0	21,0	21,0	21,0
B min	12,0	12,0	12,0	12,0
C max	27,2	27,2	27,2	27,2
H max	55,0	76,0	61,1	82,1
	E1	E2	E3	E3-A
A max	26,6	32,6	39,7	43,8
A min	14,8	14,8	21,9	32,0
B max	21,0	21,0	21,0	21,0
B min	12,0	12,0	12,0	12,0
C max	27,2	27,2	27,2	27,2
H max	53,8	74,8	59,8	80,8

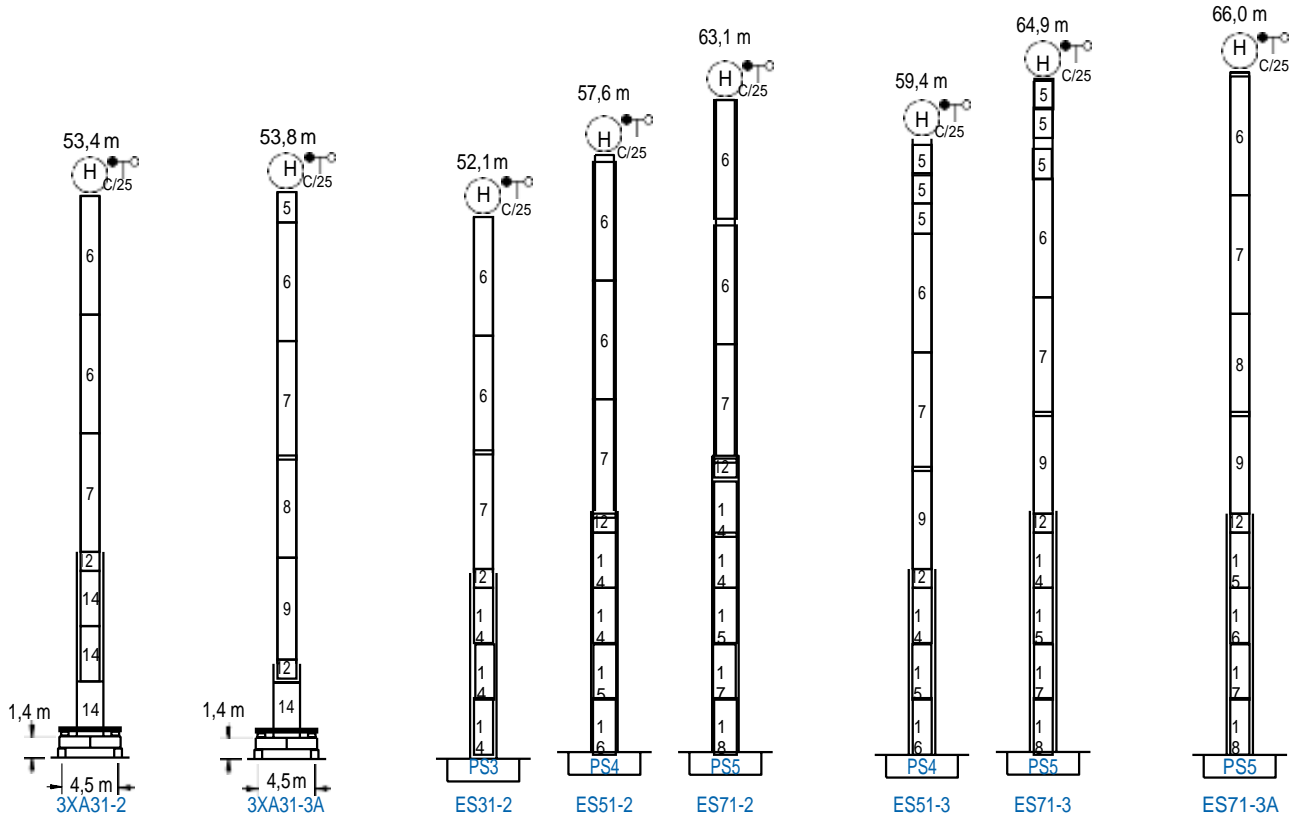
GRÚA TREPADORA

Internal climbing crane / Grue avec cage de télescopage intérieure / Kran mit klettern im Gebäude / Gruin rampante in cavetto / Кран с самоподъемом



	Hs < 300 m	Amax (m)	Amin (m)
	43,3 m 10x MH121 + 4x MT12-3A + CL20A	12,0	9,0
	40,3 m 9x MH121 + 4x MT12-3A + CL20A	12,0	8,0
37,3 m 8x MH121 + 4x MT12-3A + CL20A	12,0	7,0	

nº	Ref.	∅	h
5	MH121	1,2	3
10	MT12-3A	1,2	2,9
11	CL20A	1,2	2,6



n°	Ref.	∅	h	n°	Ref.	∅	h	n°	Ref.	∅	h
5	MH121	1,2	3,0	12A	TMS13/PMH12	1,6	1,0	16	S14	1,6	5,5
6	MH124-1	1,2	11,8	12B	TMS13/PMH13	1,6	1,0	17	TS15	1,6	5,5
7	MH124A	1,2	11,8	14	S13	1,6	5,5	18	S15	1,6	5,5
8	MT123A	1,2	10,1	15	TS14	1,6	5,5				
9	MT123	1,2	10,1								
MH124-1 = 4x MH121 - 0,2 m				1x S13 = 1x S13M				1x S15 = 1x S15M			

COMANSA LC 5010

Tels: (55) 91498900 / 52502844
 www.calidadenrentasyventas.com
 Servicio a toda la República Mexicana